



# Installation Instructions

For Part Numbers:

520-345 700-495 Airaid Oiled Media Filter

521-345 701-495 SynthaMax Dry Media Filter - Red

2016-18 NISSAN Titan XD

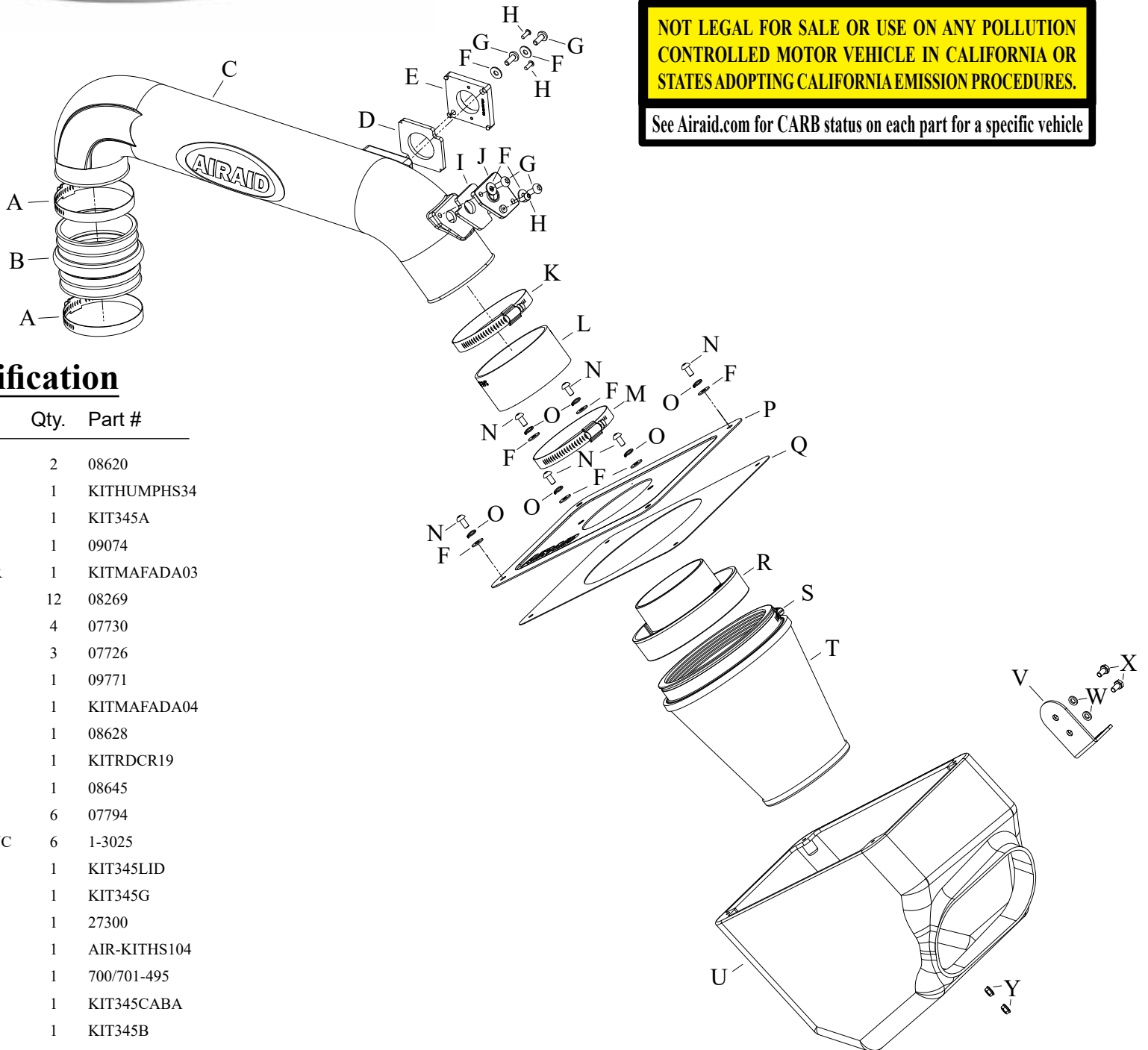
V8-5.0L Turbo Diesel

**NOT LEGAL FOR SALE OR USE ON ANY POLLUTION CONTROLLED MOTOR VEHICLE IN CALIFORNIA OR STATES ADOPTING CALIFORNIA EMISSION PROCEDURES.**

See Airaid.com for CARB status on each part for a specific vehicle

## TOOLS NEEDED:

- ratchet
- extension
- 10mm socket
- 4mm allen
- 2.5mm allen
- phillips screw driver



## Component Identification

Description	Qty.	Part #
A HOSE CLAMP #56	2	08620
B HUMP HOSE; 3.5"ID X 2.5"L	1	KITHUMPHS34
C INTAKE TUBE	1	KIT345A
D GASKET; 57-1003, 3/16 PORON	1	09074
E ADAPTER; MASS AIR SENSOR	1	KITMAFADA03
F WASHER; 6MM FLAT, SS	12	08269
G BOLT; M6 X 1.00 X 16MM, SS	4	07730
H SCREW; M4- .7 X 12, BUTTON	3	07726
I GASKET; TEMP SENSOR	1	09771
J ADAPTER; TEMP SENSOR	1	KITMAFADA04
K HOSE CLAMP #60 STAINLESS	1	08628
L REDUCER; 4"ID X 3.875"ID	1	KITRDCR19
M HOSE CLAMP #64 STAINLESS	1	08645
N BOLT; M6 X 1.00" 12MM, SS	6	07794
O WASHER, M6 SPLIT LOCK ZINC	6	1-3025
P AIR BOX LID	1	KIT345LID
Q LID GASKET	1	KIT345G
R ADAPTOR; 57-3058 #454	1	27300
S HOSE CLAMP #104	1	AIR-KITHS104
T AIRAID FILTER	1	700/701-495
U AIR BOX	1	KIT345CABA
V BRACKET; 52%-345, TB/PC	1	KIT345B
W WASHER; 5MM FLAT, SS	2	08212
X BOLT; M5 - 0.8 X 12MM B/H, SS	2	07734
Y NUT; M6, HEX, SERRATED	2	444.460.04

Full color instructions can be viewed on our web site at Airaid.com. If you need any assistance please call 1-800-498-6951 to speak with a representative in our Customer Service Center before returning the product.

## TO START:

1. Turn off the ignition and disconnect the negative battery cable.

**NOTE: Disconnecting the negative battery cable erases pre-programmed electronic memories. Write down all memory settings before disconnecting the negative battery cable. Some radios will require an anti-theft code to be entered after the battery is reconnected. The anti-theft code is typically supplied with your owner's manual. In the event your vehicles anti-theft code cannot be recovered, contact an authorized dealership to obtain your vehicles anti-theft code.**



2. Disconnect the mass air sensor and inlet air temperature sensor electrical connections.



3. Loosen the hose clamp that secures the factory intake tube to the turbo inlet. Release the clips that secure the upper air filter housing to the lower housing and then remove the upper housing and intake tube from the vehicle.



4. Remove the bolt that secures the lower air filter housing to the inner fender and then pull firmly up to release the lower housing from the mounting grommets and remove it from the vehicle.

**NOTE: This bolt will be reused in a later step.**



5. Remove the gasket from the factory fresh air intake.



6. Remove the two mounting grommets from the factory lower air filter housing and install them into the AIRAID® housing as shown.

## Continued...



7. Remove the factory grommet and sleeve from the factory lower air filter housing.



8. Install the grommet and sleeve from the previous step into the provided mounting bracket, then install the mounting bracket through the AIRAID® air filter housing and secure with the provided hardware.



9. Install the AIRAID® air filter housing onto the mounting studs on the inner fender and secure with the factory bolt removed in step #4.

**NOTE: Due to manufacturer tolerances, it may be necessary to use the provided tie wrap to secure the factory A/C line so that it does not rub the AIRAID air filter housing.**



10. Install the filter adapter onto the air filter housing lid and secure with the provided hardware.



11. Place the housing lid gasket onto the lid and then install the AIRAID® air filter and secure with the provided hose clamp.



12. Install the lid assembly onto the AIRAID® air filter housing and secure with the provided hardware.



13. Install the provided step coupler onto the filter adapter and secure with the provided hose clamp.



14. Install the provided hump coupler onto the turbo inlet and secure with the provided hose clamp.



15. Remove the mass air sensor and temperature sensor from the factory air filter housing.



16. Install the factory sensors into the provided sensor adapters and then install the provided gaskets onto the adapters.



17. Install the sensor assemblies into the AIRAID® intake tube and secure with the provided hardware. **NOTE: Be sure the mass air sensor is installed in the correct direction.**



18. Install the AIRAID® intake tube assembly into the coupler at the turbo and filter adapter, adjust the tube for best fit and then secure with the provided hose clamps.



19. Reconnect the mass air and temperature sensor electrical connections.



**20. Double check your work!** Make sure there is no foreign material in the intake path. Make sure all clamps, hoses, bolts, and screws are tight. Double check the hood clearance! **Reconnect the negative battery cable!**

Thank you for purchasing the Airaid Intake System. Contact Airaid @ (800) 498-6951 8:00 AM - 5:00 PM MST weekdays for questions regarding fit or instructions that are not clear to you. Your Airaid Intake System was carefully inspected and packaged. Check that no parts are missing, or were damaged during shipping. If any parts are missing, contact Airaid. The air filter element is protected from direct exposure to water and debris; care should be taken not to drive through deep water.

**WATER INGESTION IS THE DRIVERS RESPONSIBILITY!** The air filter is reusable and should be cleaned periodically.

### FILTER IDENTIFICATION

700-495 Airaid Oiled Media

701-495 Airaid SynthaMax Dry Media - Red

For your Oiled media filter we offer the Airaid Tune Up Kit!



P/N 790-551 Aerosol Spray  
P/N 790-550 Squeeze Spray



**NOT LEGAL FOR SALE OR USE ON ANY POLLUTION CONTROLLED MOTOR VEHICLE IN CALIFORNIA OR STATES ADOPTING CALIFORNIA EMISSION PROCEDURES.**

See Airaid.com for CARB status on each part for a specific vehicle

## SynthaMax

Synthamax Air Filters **do not** require oil. Service air filter as needed by cleaning with common non-petroleum all-purpose household cleaner and water. Simple Green®, Formula 409® or equivalent works great. Apply cleaner to outside of air filter and allow to soak. Then flush filter clean from the inside out with a garden hose and repeat steps if necessary. Do not apply high pressure water or air to clean filter. Allow filter to air dry and reinstall.